

Installation Instructions

Below are the steps to setup the “typical” installation of cclnformer. You should read this page before installing cclnformer and refer to it during the installation process. Do not forget Step #4.

1. **Begin installation with the CD**

Insert the CD. The installation should begin automatically.

If it doesn't, Click **Start—Run** and click the **Browse** button. Then navigate to your CD drive where you put the cclnformer CD and choose the *Autorun.exe* file.

2. **.Net 2.0 Framework**

cclnformer requires the .Net 2.0 Framework (or later), which is a major Windows update, and your computer may already have this installed. The cclnformer CD includes this update and will test your computer to see if it is not installed. If it is installed, the CD will skip it and proceed to install the cclnformer program itself.

If your computer does not have the windows update for the .Net Framework 2.0, the cclnformer installation will install this update for you. When the .Net Framework 2.0 installation is completed, you will need to restart your cclnformer program installation. Simply eject and reinsert the CD.

If the installation fails with a reason that you already have a later .Net Framework installed, you can manually run the cclnformer program-only installation file. Simply re-insert your cclnformer CD and cancel the automatic installation. Then click **Start—Run** and click the **Browse** button. Then navigate to your CD drive where you put the cclnformer CD and choose the *WISetup.exe* file. NOTE: this will only install the cclnformer program. The .Net 2.0 Framework (or later) is required for cclnformer to work. Install the cclnformer program without the .Net 2.0 framework may have adverse effects.

3. **cclnformer Setup Wizard (see figure at right)**

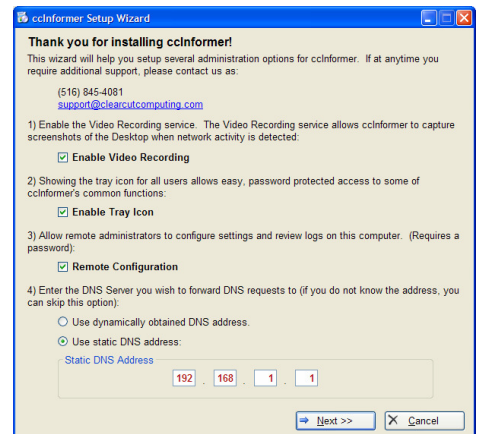
This screen will ask you if you want to turn on certain important features of cclnformer. You may change these setting later by going to the Control Panel of the program (see page 1)

Enable Video Recording — immediately turns on the screen recorder of cclnformer once installation is completed.

Enable Tray Icon — displays the cclnformer logo in the System Tray of the computer screen (near the time). The only time you might not want to display the Tray Icon is if you want to make it not obvious that the computer contains the cclnformer program. This may be desired for computers that stay in a teenager or other age child's room and for employees.

Remote Configuration — Checking this box will allow you to review the text logs and video screen recordings from another computer on your network with the optional cclnformer Remote Viewer program (purchased separately).

DNS Server — This should be set to your router's IP address (if you have one), or if present, your file server IP address. If your computers are set to “Obtain IP and DNS Settings Automatically,” you can select the first choice to “Use dynamically obtained DNS address.” NOTE: Setting this step incorrectly can result in no Internet access and no network server connection; but you can change this setting from the cclnformer Control Panel.



4. **Post-Installation**

While this concludes the formal installation of cclnformer, there are other settings that you should configure to get the desired functionality out of cclnformer. Most important are to set a program password, so the cclnformer cannot be compromised, and configure the email settings so you can get the reports emailed to you. See the instructions for the **Settings tab** elsewhere in the *User Manual*. Also, you will need to setup the website filtering to block (or allow) what you want. See the instructions for the **Web Filter tab** elsewhere in the *User Manual*.